



Aarhus International School Primary Years Programme (PYP) Programme of Inquiry (POI) 2026-2027



*The programme of inquiry is student-driven, making this a flexible document that can be modified and adapted throughout the school year based on the needs and dynamics of our learning community.

The IB PYP Transdisciplinary Themes



Who We Are

An inquiry into identity as individuals and as part of a collective through:

- physical, emotional and spiritual health and well-being;
- relationships and belonging;
- learning and growing

How We Organise Ourselves

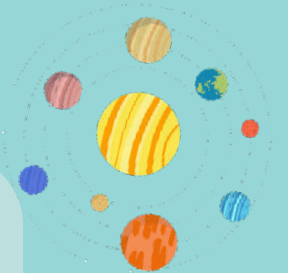
An inquiry into systems, structures, and networks through:

- interactions with and between social and ecological systems;
- approaches to livelihoods and trade practice - intended and unintended consequences;
- representation, collaboration, and decision-making

How the World Works

An inquiry into the understandings of the world and phenomena through:

- patterns, cycles, systems;
- diverse practices, methods, and tools;
- discovery, design, innovation, possibilities, and impacts



Where We Are in Place and Time

An inquiry into histories and orientation in place, space and time through:

- periods, events and artifacts;
- communities, heritage, culture and environment;
- natural and human drivers of movement, adaptation and transformation

Sharing the Planet

An inquiry into the interdependence of human and natural worlds through:

- rights, responsibilities, and dignity of all;
- pathways to just, peaceful, and reimagined futures;
- nature, complexity, coexistence, and wisdom

How We Express Ourselves

An inquiry into the diversity of voice, perspectives, and expression through:

- inspiration, imagination, creativity;
- personal, social, and cultural notes and practices of communication;
- intentions, perceptions, interpretations, and responses





Early PYP



PYP
1 & 2

	UOI1	UOI2	UOI3	UOI4
Theme	Who We Are Let's Play	How We Express Ourselves Storytelling	How We Organise Ourselves Transportation	Sharing the Planet Animals
Central Idea	Play helps us to connect socially and to develop emotionally	Imagination can be shared through storytelling	Transportation helps communities to function	People have responsibility to care for the animals around them



PYP 3

	UOI1	UOI2	UOI3	UOI4
Theme	Who We Are Senses	How We Express Ourselves Around The World In Stories	How the World Works Construction	Sharing The Planet Water
Central Idea	Our senses help us explore, investigate and understand the world around us	New Unit! -In progress-	New Unit! -In progress-	New Unit! -In progress-





Lower PYP



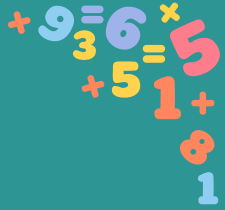
PYP
4

	UOI1	UOI2	UOI3	UOI4	UOI5	UOI6
Theme	How We Organise Ourselves Communities	How We Express Ourselves Imagination & Space	Where We Are in Place and Time Climate Adaptation	How The World Works Living Things	Sharing the Planet Sustainability	Who We Are Autobiographies
Central Idea	For a community to function, all members have shared values and expectations	Imagination is a powerful driver for developing our ability to think, create and explore the Universe	Where we live impacts how we live	All living things have predetermined needs for survival	People can take actions to protect and care for the planet	New Unit! -In progress-

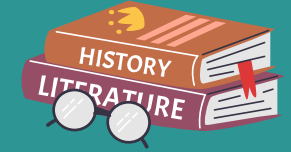


PYP
5

	UOI1	UOI2	UOI3	UOI4	UOI5	UOI6
Theme	Sharing the Planet Habitats	Where We Are in Place and Time Explorers	How We Express Ourselves Celebrations	Who We Are Human Body	How the World Works Inventions	How We Organise Ourselves Marketplaces
Central Idea	When interacting with natural habitats, humans make choices that have an impact on other living things	Explorations lead to discovery and new opportunities	Cultural traditions and celebrations are expressions of shared beliefs	The effective interactions between human body systems contribute to human health and survival	Inventions have influenced the progress of human societies	A marketplace is a system of trading goods and services to meet the needs of a community



Upper PYP



UOI1

UOI2

UOI3

UOI4

UOI5

UOI6

Theme

Who We Are

Who We Are in Place and Time

Sharing the Planet

How We Express Ourselves

How The World Works

How We Organise Ourselves

My Brain and Me

Ancient Civilisations

Natural Disasters

Fashion

Forces and Motion

Food and Farming

Central Idea

Our brains are unique and shape the way we perceive and interact with the world

Ancient civilizations continue to influence our everyday lives

Humans are impacted by natural disasters and create preventative and responsive systems to solve problems

We express our personal interests and creativity through our clothing choices

Forces impact the movement and stability of objects

Food influences people's way of life

PYP 6

PYP 7

	UOI1	UOI2	UOI3	UOI4	UOI5	UOI6
Theme	How We Express Ourselves Creative Expression	Where We Are in Place and Time Artifacts and Land Structures	How the World Works Technology is Evolving	How We Organise Ourselves Human Enterprise	Sharing the Planet Sustainability	Who We Are Genetics
Central Idea	Through creative expression, we discover more about ourselves and the world we live in	Artifacts and land structures may provide evidence of the development of humans, communities and cultures	Technology is constantly evolving and has an impact on human progress	Organizations solve problems through human endeavour and enterprise	People's access to resources and energy impacts how they live and how sustainable their communities are	Genetic traits and relationships shape identity and connection in humans and other species

PYP 8

	UOI1	UOI2	UOI3	UOI4	UOI5 - PYPx	UOI6
Theme	Who We Are Values	Where We Are in Place and Time Viking and Migration	How the World Works Changing Materials and Scientific Inquiry	How We Organise Ourselves Global Economy	Sharing the Planet Exhibition	How We Express Ourselves Transitions
Central Idea	Our values shape who we are and influence how we interact with the world	Human migration is a response to challenges and opportunities	Scientific inquiry enables us to better understand the world around us	Human choices and actions about resources and products affect environmental sustainability	Students create their own Central Ideas during this unit	Creative expression allows for reflection in important times of transition

